



• Artistic Impression

- **149 M² LIVING SPACE, 150 M² GARAGE PLUS 30M² VERANDAH**
- **KITSET* AVAILABLE FROM - \$214,420 INCL GST - \$717 / M²**
- **BUILDING** ERECTED TO LOCKUP STAGE FROM - \$423,032 INCL GST - \$ 1,286 / M²**

INCLUDES-

- ✓ Concept Plans to Full Design - Kit or Build
- ✓ NZ Steel for Strength and Durability
- ✓ NZ Made - Double Glazed Joinery - Low E Xcel
- ✓ Colorsteel™ Maxam Corrugate Cladding
- ✓ NZ Made Coloursteel Roller Doors
- ✓ Built to withstand High Wind Zone of 45 m/s
- ✓ Internal Wall Framing
- ✓ We can take care of All Building & Resource Consents - Kit / Build
- ✓ 50 year - Structural & Cladding Guarantee (site dependent)
- ✓ 100 % NZ Owned and Operated
- ✓ Fully Compliant to NZ Building Code



CONTACT US:

 0800 555 147

 218 Hunter Road, Eureka

 Enquiries@waikatosheds.co.nz

 www.waikatosheds.co.nz

Please Note -

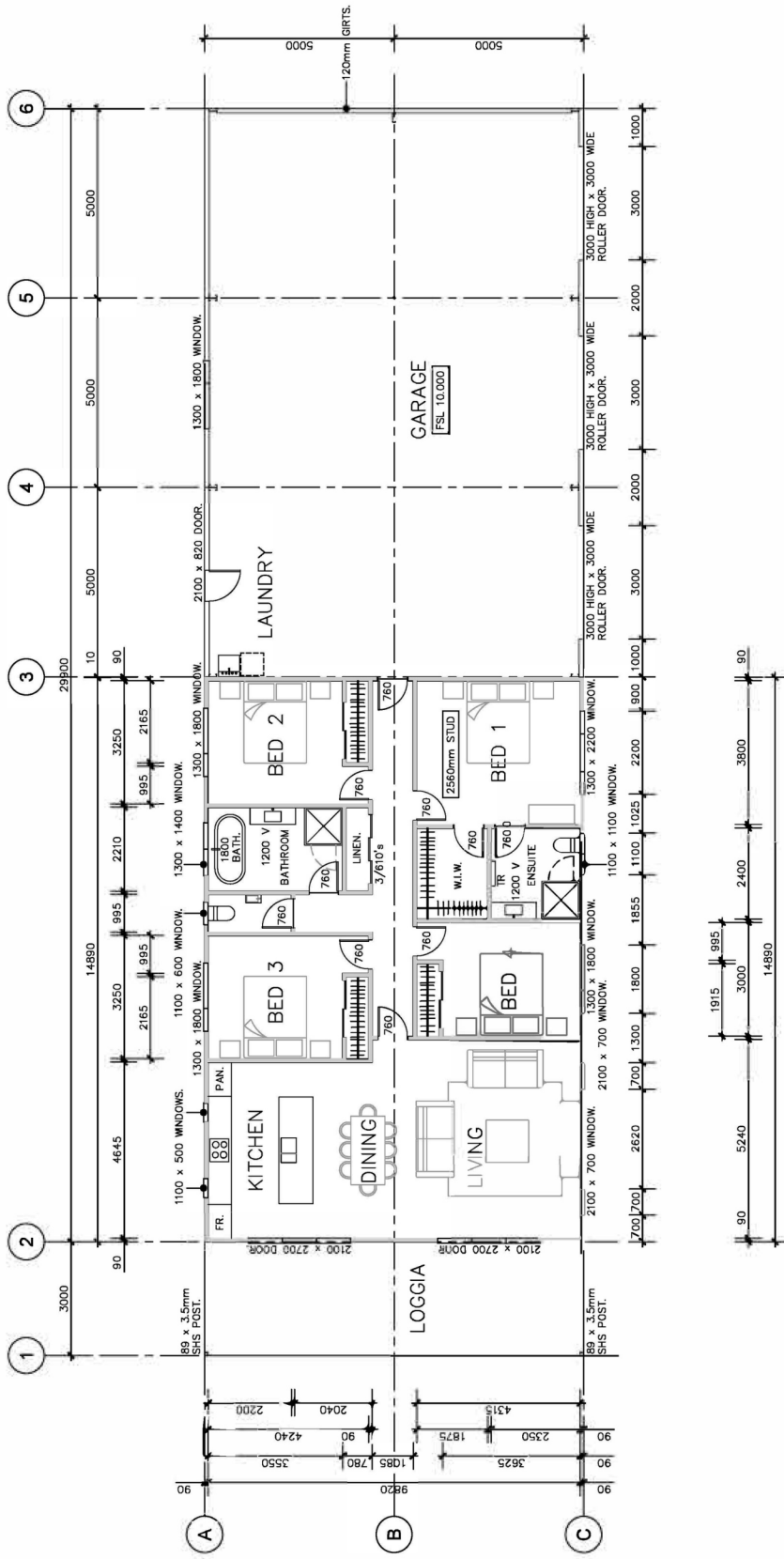
*Kitset and Build **Do Not** include : - section, internal fit-out, appliances, septic field & water tanks, earthworks & metal driveway, concrete apron & path, council fees, soil, storm and waste water reports.

**Build includes construction, concrete slab and external finish

Eureka Barndominium - Floor Plan

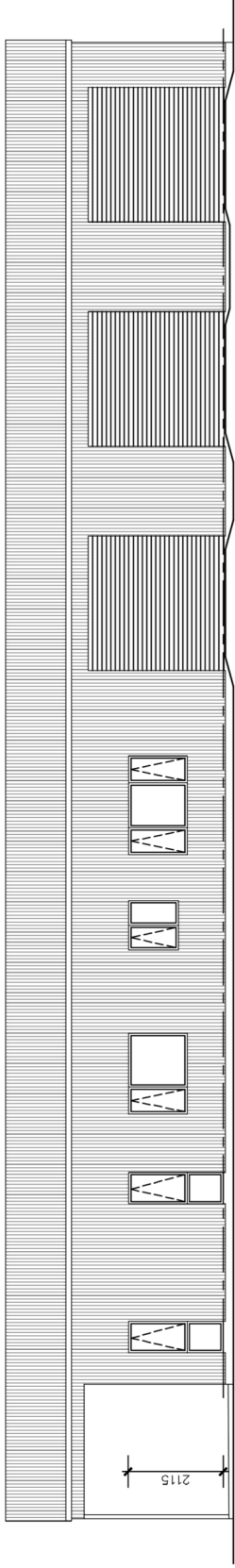


Eureka Barndominium Plan

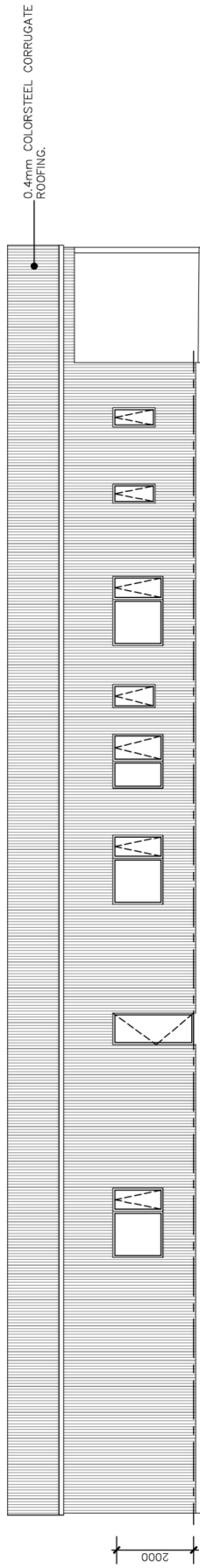


DWELLING AREA:	148.90 sq m
GARAGE / SHED AREA:	150.10 sq m
TOTAL AREA:	299.00 sq m
LOGGIA AREA:	30.0 sq m

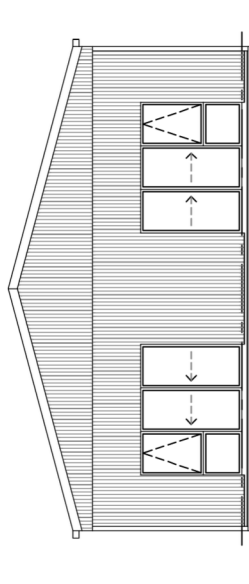
Eureka Barndominium Plan



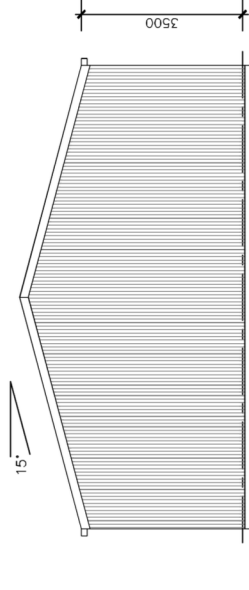
WEST ELEVATION



EAST ELEVATION



NORTH ELEVATION



SOUTH ELEVATION