



• Artistic Impression

- **KITSET* AVAILABLE FROM - \$ 89,582 INCL GST - \$1,276 / M²**
- **BUILDING** ERECTED TO LOCKUP STAGE FROM - \$ 153,625 INCL GST - \$ 2,188 / M²**

INCLUDES-

- ✓ Concept Plans to Full Design - Kit or Build
- ✓ NZ Steel for Strength and Durability
- ✓ NZ Made - Double Glazed Joinery - Low E Xcel
- ✓ Colorsteel™ Maxam Corrugate Cladding
- ✓ Built to withstand High Wind Zone of 45 m/s
- ✓ Fully Compliant to NZ Building Code
- ✓ We can take care of All building & resource consents - kit / build
- ✓ 50 year - Structural & Cladding Guarantee (site dependent)
- ✓ Internal Wall Framing
- ✓ 100 % NZ Owned and Operated



CONTACT US:

0800 555 147

218 Hunter Road, Eureka

Enquiries@waikatosheds.co.nz

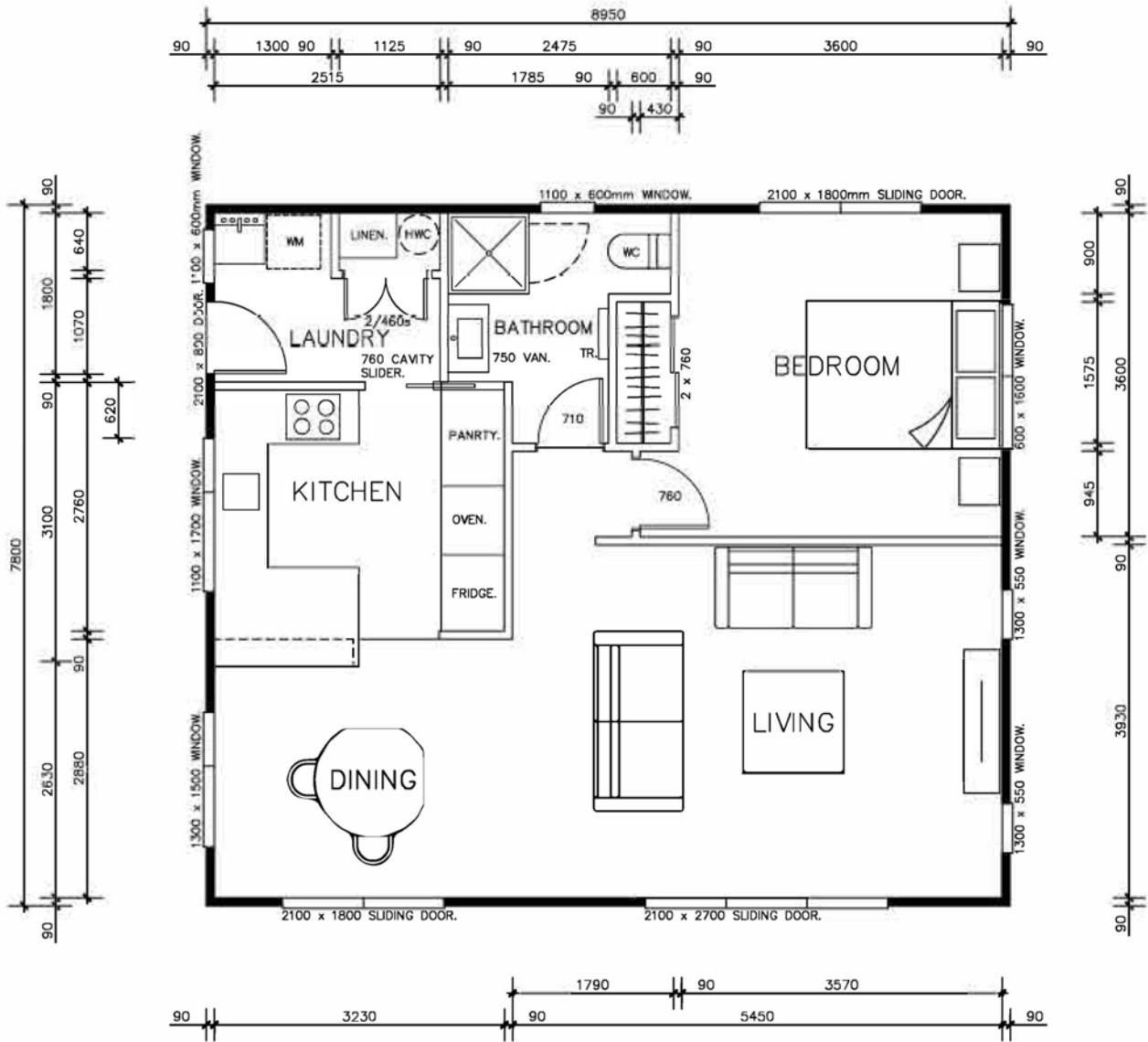
www.waikatosheds.co.nz

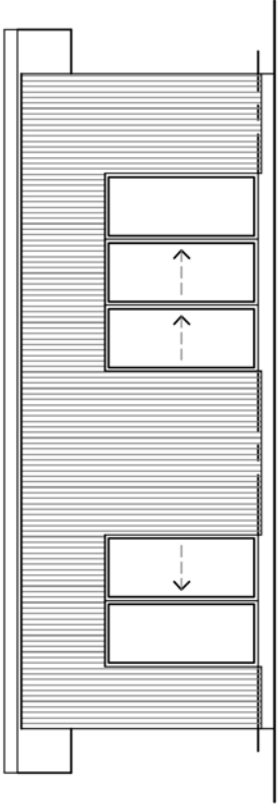
Please Note -

*Kitset and Build **Do Not** include : - section, internal fit-out, appliances, septic field & water tanks, earthworks & metal driveway, concrete apron & path, council fees, soil, storm and waste water reports.

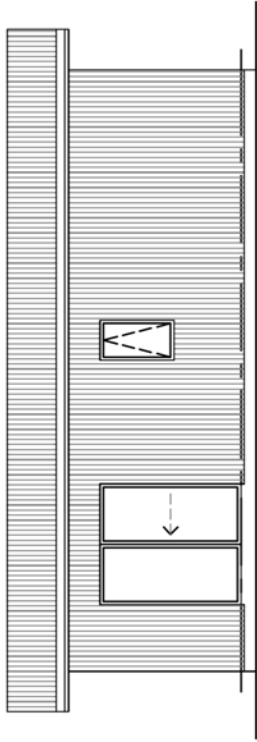
**Build includes construction, concrete slab and external finish

MODERN GRANNY FLAT - ONE BEDROOM

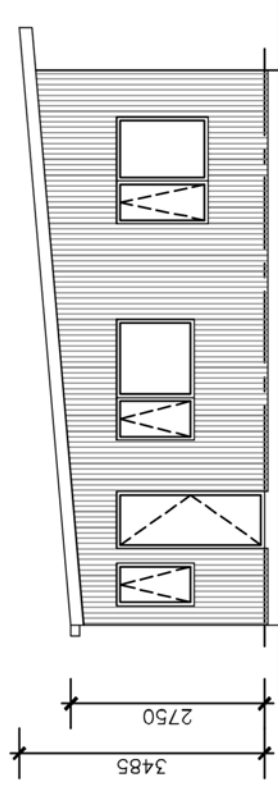




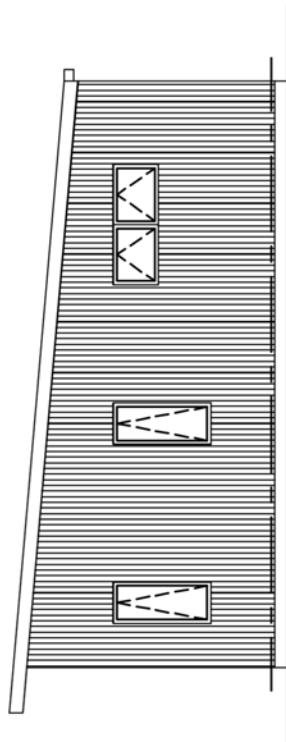
WEST ELEVATION



EAST ELEVATION



NORTH ELEVATION



SOUTH ELEVATION

