



- The above image is an artistic impression

- **70 M² LIVING SPACE WITH 86 M² DOUBLE GARAGE**
- **KITSET* AVAILABLE FROM - \$133,232 INCL GST - \$ 854 / M²**
- **BUILDING** ERECTED TO LOCKUP STAGE FROM - \$258,582 INCL GST - \$1587 / M²**

INCLUDES-

- ✓ Concept Plans to Full Design - Kit or Build
- ✓ NZ Steel for Strength and Durability
- ✓ NZ Made - Double Glazed Joinery - Low E Xcel
- ✓ Colorsteel™ Maxam Corrugate Cladding
- ✓ NZ made Insulated Sectional Doors
- ✓ Built to withstand High Wind Zone of 45 m/s
- ✓ Internal Wall Framing
- ✓ We can take care of All Building & Resource Consents - Kit / Build
- ✓ 50 year - Structural & Cladding Guarantee (site dependent)
- ✓ 100 % NZ Owned and Operated
- ✓ Fully Compliant to NZ Building Code



CONTACT US:

 0800 555 147

 218 Hunter Road, Eureka

 Enquiries@waikatosheds.co.nz

 www.waikatosheds.co.nz

Please Note -

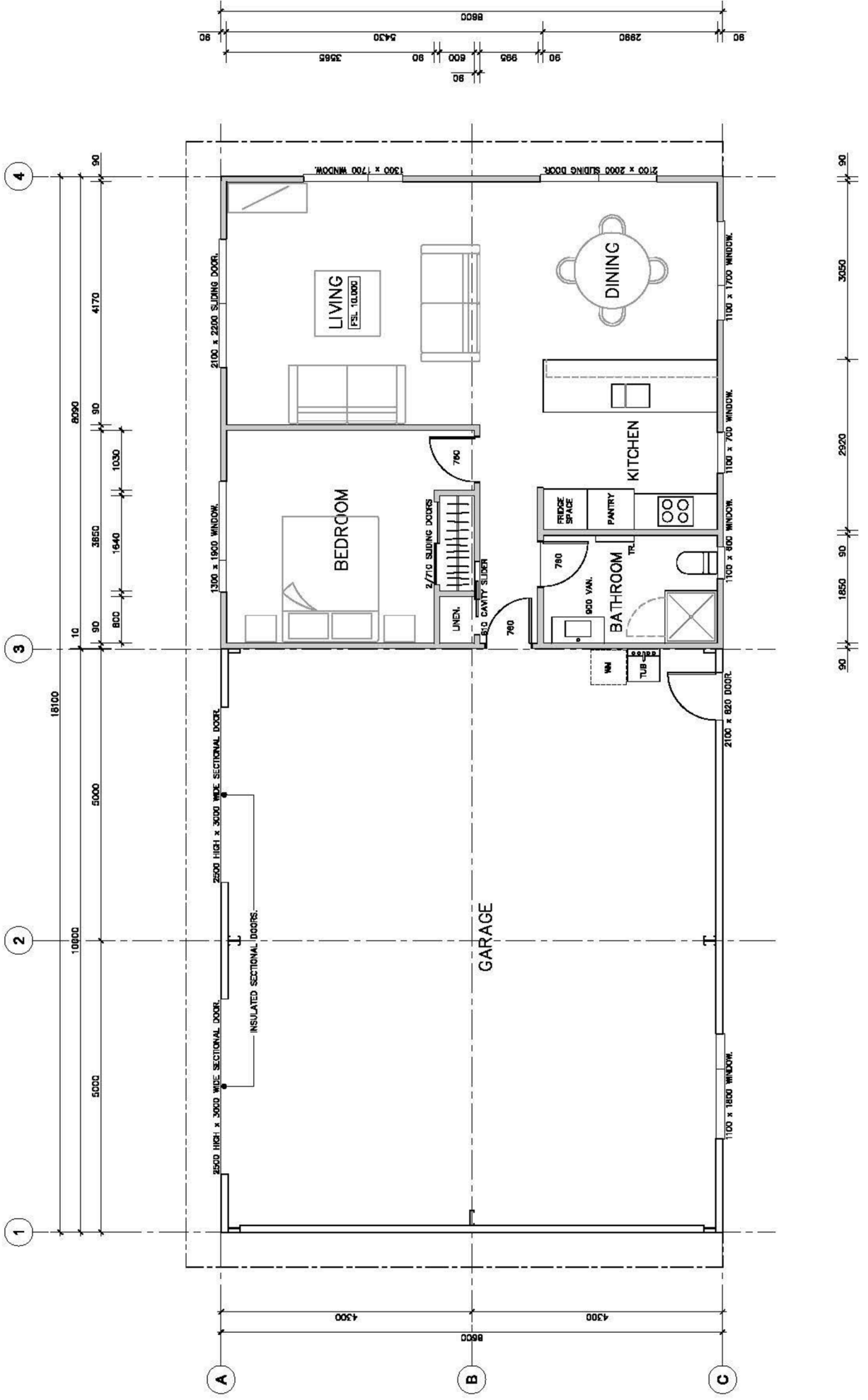
*Kitset and Build **Do Not** include : - section, internal fit-out, appliances, septic field & water tanks, earthworks & metal driveway, concrete apron & path, council fees, soil, storm and waste water reports.

**Build includes construction, concrete slab and external finish

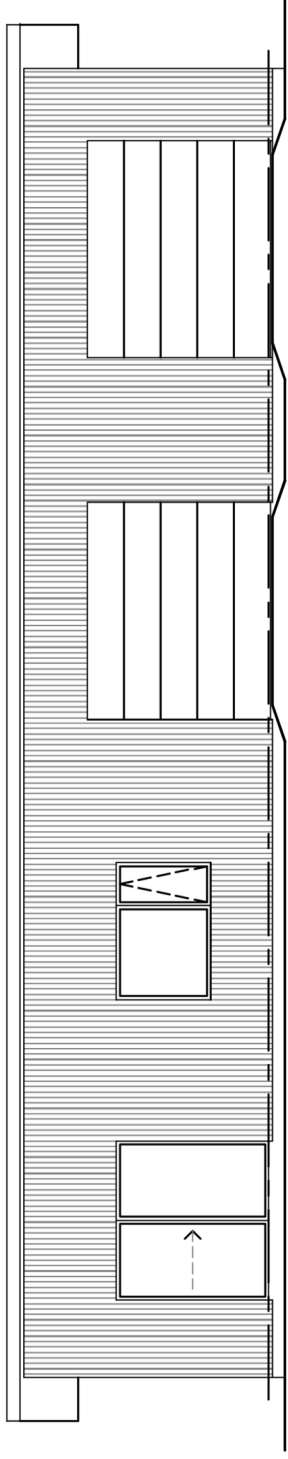
Queenstown Shed House - Floor Plan



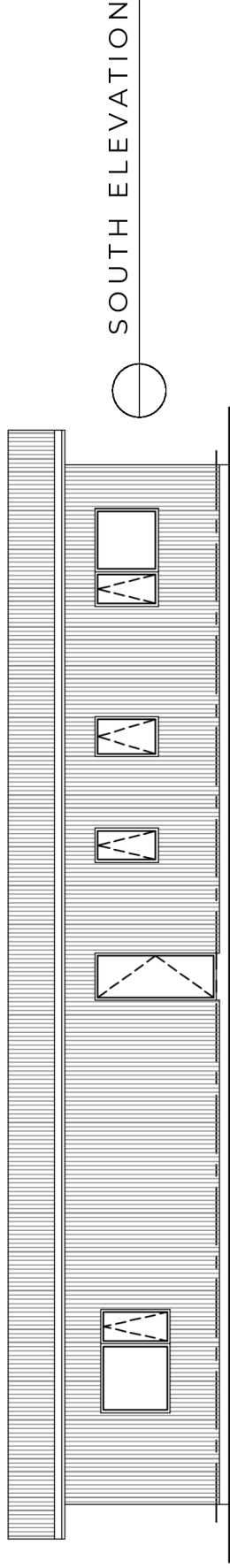
Queenstown Shed House Plan



Queenstown Shed House Plan



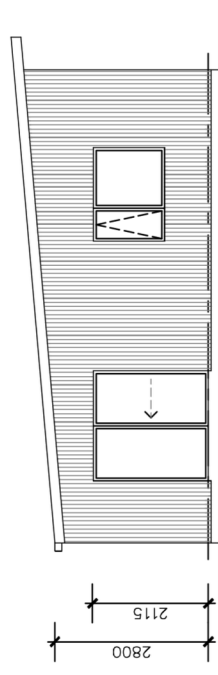
NORTH ELEVATION



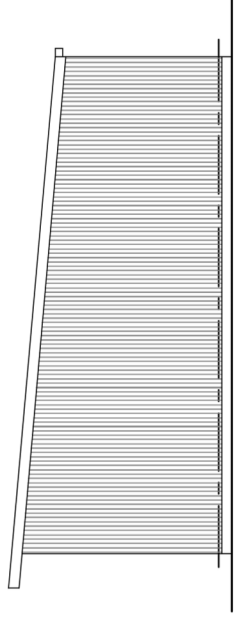
SOUTH ELEVATION



5'



EAST ELEVATION



WEST ELEVATION

